

KU WOMEN IN COMPUTING

Sponsorship 2024-2025

Women in Computing

Est



2017

THE UNIVERSITY OF
KU
KANSAS



Table of Contents

<u>Introduction</u>	3
<u>Demographics</u>	4
<u>Why Support?</u>	5
<u>Sponsorship Packages</u>	6
<u>Events You Support</u>	7
<u>How to Become a Sponsor</u>	9
<u>Conclusion</u>	10

Introduction

Fall 2024

Dear Company Representatives

On behalf of the 2024–2025 executive board of KU’s Women in Computing organization, we sincerely thank you for considering involvement with our organization. We deeply appreciate your time and effort. KU’s Women in Computing is a support group for women in the technology field, connecting women to each other, the department, and the industry. Weekly meetings include hands-on workshops, networking events, social gatherings and much more; all aiming to empower women in the club and create a sense of community while promoting professional growth. With your support, you can help us with our mission towards helping these driven and talented women gain invaluable exposure and experience in the industry.

We kindly request your consideration as a Corporate Sponsor for 2024–2025. By becoming a sponsor you can help empower the future leaders of technology.

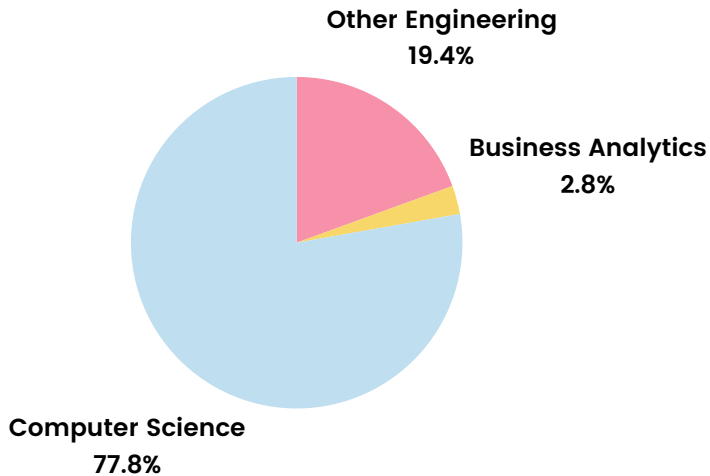
Please refer to the detailed sponsorship packages for more information on our goals and events. If you have any questions, feel free to contact us. Thank you for considering our request, and we look forward to discussing partnership possibilities.

Sincerely,

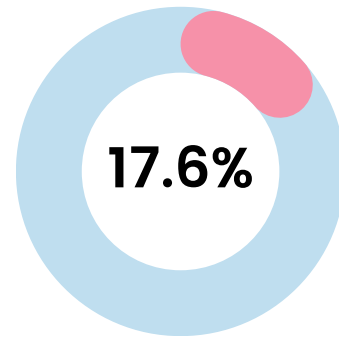
Student Members of KU-WIC

Demographics

Majors



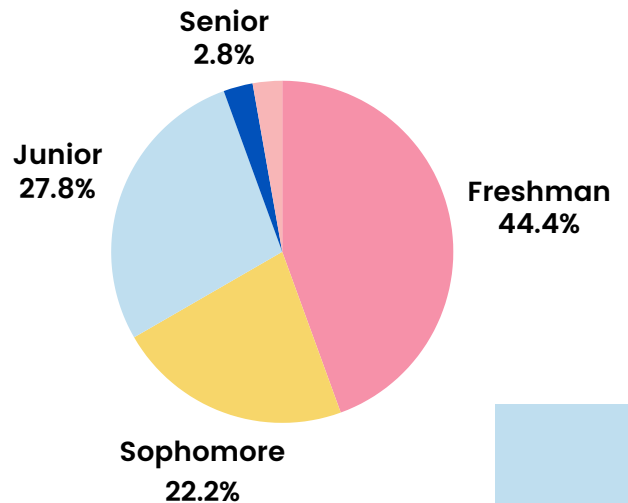
First Generation College Students



Other Involvements

- First Generation Professionals
- Society of Women Engineers
- Upsilon Pi Epsilon (Computer National Honors Society)
- Society of Asian Scientist and Engineers
- Association of Computing Machinery
- Theta Tau (Frat. for Engineers)
- American Society of Mechanical Engineers
- Biomedical Engineering Society
- Girls Who Code
- Catalyst (Entrepreneurship program)
- Self Engineering Leadership Fellows

Years



Why Support?



☆ Acquire Emerging Talent

KU's WIC is full of skilled, eager-to-learn women ready to showcase their talents. Sponsoring offers you direct access to this talent for internships, co-ops, and full-time roles, giving you a chance to highlight your company's strengths!

☆ Networking Opportunities

Your sponsorship will connect you with our members, alumni, and guest speakers. This can spark valuable business relationships, collaborations, and insights from future and recent graduates.

☆ Motivate Future Leaders of Tech

Sponsoring KU's Women in Computing lets your company inspire the next generation of tech leaders. Through our events, workshops, and mentorship programs, you can share your expertise, motivate talented students, and help them achieve their career goals.

Sponsorship Packages

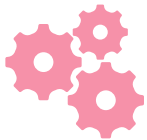
Brand Name	Bronze (\$500+)	Silver (\$750+)	Gold (\$1000+)
Lead 45 min Workshop/Panel @ General Meeting			✓
Instagram/LinkedIn Post		✓	✓
Logo on Merchandise		✓	✓
Logo in Annual Report sent to Members & Alumni	✓	✓	✓
Logo on Website	✓	✓	✓



If you're a **startup or small company** with concerns about the donation amount, please feel free to reach out to us. We're excited to partner with companies of any size and would be happy to discuss your needs!

Events You Support

Professional Development Events



Our professional development events include talks from professional and experienced industry leaders, sharing industry insights with our members. We also collaborate with other clubs for joint sessions, where members learn technical skills and expand their networks. These events are designed to boost industry knowledge and prepare members for career success in tech.

Mentorship Program



Our Mentorship Program pairs experienced members with newcomers to offer guidance in academics and career planning. Mentors share industry insights, provide support, and help navigate the tech field. The program builds strong relationships, encourages personal growth, and ensures every member has the tools to succeed.

Website Committee



Our Website Program meets biweekly to teach essential web development skills like HTML, CSS, Python, and more! Members gain hands-on experience by creating their own pages on our club's website, applying what they learn and showcasing their work in a collaborative environment.

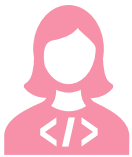
Events You Support

★ Social Events



Our social events, like paint nights and Coco and Cram, provide fun and relaxing opportunities for members to unwind and connect. These gatherings foster a sense of community, allowing members to build friendships and take a break from academics while enjoying creative and social activities together.

★ GirlCode



GirlCode empowers middle school girls through coding, with 20 participants per session, held twice each semester. These hands-on workshops use Raspberry Pi, Scratch, and more to teach programming basics, foster teamwork, and build confidence in STEM, with guidance from Women in Computing volunteers.



How to Become a Sponsor

If you're interested in sponsoring our organization for the 2024-2025 academic year, please email ukansaswic@gmail.com and cc

- Bhana Palvih, IHAWKe Program Coordinator - palvih.bhana@ku.edu
- Dave Bryd-Stadler, KU Endowment - dstadler@kuendowment.org

Please write 2024-2025 Corporate Sponsorship as the subject line. Include the following details in your email:

- Company Name
- Contact Name
- Mailing Address
- Phone Number
- Sponsorship Tier and Amount:
 - Bronze: \$500+
 - Silver: \$750+
 - Gold: \$1000+

Once we receive your information, we'll reach out to guide you through the next steps of the sponsorship process.

Conclusion



We thank you for your continued support in our efforts to contribute to empower women in tech!

Please reach out to us via email for inquiries and questions

Email - ukansaswic@gmail.com

Instagram - [@ku_wic](https://www.instagram.com/ku_wic)

LinkedIn - [Kansas Women in Computing](https://www.linkedin.com/company/kansas-women-in-computing)

Website - ukansas-wic.github.io